



# Finding care options is now easier

## Our Find Care tool helps you find doctors and compare costs

Choosing a provider who is right for you makes a difference — and choosing a provider in your plan can help keep your costs under control. You can easily find high-quality, cost-effective care using our Find Care tool on [anthem.com](https://www.anthem.com).

### How you can use Find Care

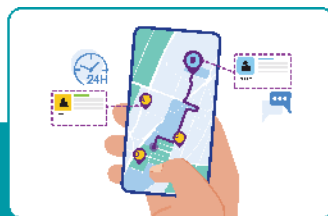
The Find Care tool brings together details about doctors, hospitals, labs and other health care facilities in your plan. You can easily compare what's important to you, like cost, location and office hours. Find Care helps you:



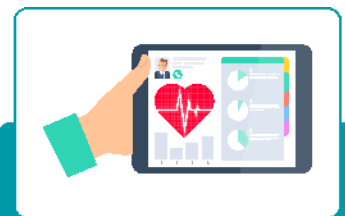
Search for providers and facilities in your plan by name, specialty or procedure.



Compare costs for health care services based on your plan.



Find providers near you and explore virtual care options.



Review details about doctors, such as their specialties, gender, languages spoken and contact information.

### Choose with confidence

You can start by logging in to [anthem.com](https://www.anthem.com). Select [Find Care](#)

## Use Member ID for Basic Search

Find doctors, hospitals and more near you. Search your medical plan without logging in.

ID number prefix: **KZU**.

[Continue](#)