

PUMA™ BUNGEE LAUNCH SYSTEM



AeroVironment's Bungee Launch System (BLS) allows for easy launch of Puma™ 2 AE, Puma 3 AE, or Puma LE aircraft in environmental scenarios where a hand launch is not preferred. Constructed from military grade bungee cord material, with a 90 ft [27.4 m] pull length, the BLS is lightweight, portable, all environment rated, and can be set up and operational in less than 10 minutes. With multiple ground fastener options included, the BLS can be securely installed in a variety of soil types or mounted to low, immovable objects for mission flexibility. The BLS comes packaged in a weatherproof case that includes everything needed to transport, install, and operate the system. The BLS is standard equipment with every Puma LE system, and is available as an optional equipment accessory for Puma 2 AE and Puma 3 AE configurations.

Easy Launch of Puma 2 AE, Puma 3 AE, and Puma LE

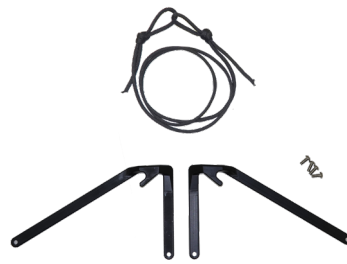
PUMA™ BUNGEE LAUNCH SYSTEM

SPECIFICATIONS

COMPATIBILITY	Puma 2 AE, Puma 3 AE, Puma LE
MAX LAUNCH ALTITUDE	10,000 ft (3,048 m) density altitude
DIMENSIONS PACKED BUNGEE LAUNCH SYSTEM	Pelican Case: 21.2 in x 16 in x 10.6 in (53.8 cm x 40.6 cm x 27 cm)
BUNGEE LAUNCH SYSTEM WEIGHT	40 lb (18 kg)
BUNGEE STRETCH LENGTH	90 ft (27 m) from secure point to aircraft attachment, includes leadline
OBSTACLE CLEARANCE FROM RELEASE POINT IN STANDARD CONFIGURATION (SEA LEVEL)	Puma 2 AE and Puma 3 AE: Can clear 50 ft (15 m) obstacle at 394 ft (120 m) Puma LE: Can clear 50 ft (15 m) obstacle at 279 ft (85 m) <i>Note: Distances can vary as they depend on environmental conditions</i>
TEMPERATURE CAPABILITY	-29 to +49 °C
LAUNCH WEIGHT CAPABILITY	Puma 2 AE and Puma 3 AE: 20 lb (9 kg) Puma LE: 27 lb (12.2 kg)



Bungee Launch System components

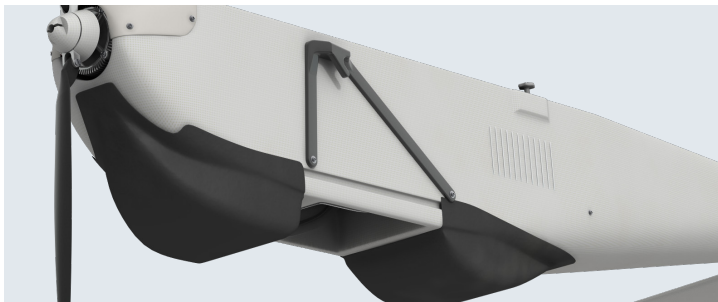
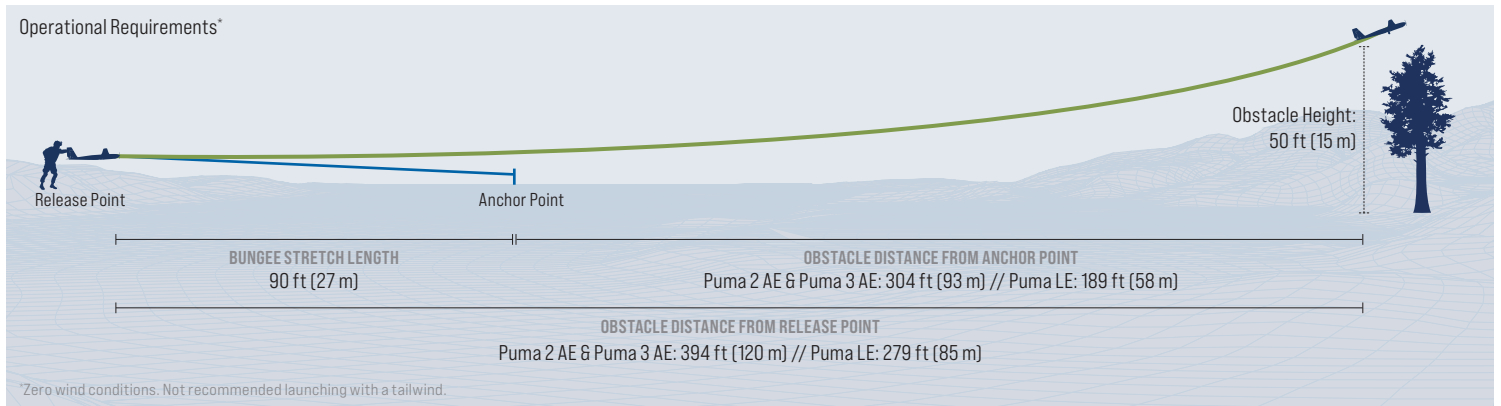


Bungee Adapter for Puma 2 AE and Puma 3 AE



Packed Bungee Launch System

Operational Requirements*



Puma 2 AE and Puma 3 AE mounting bracket



Puma LE mounting bracket